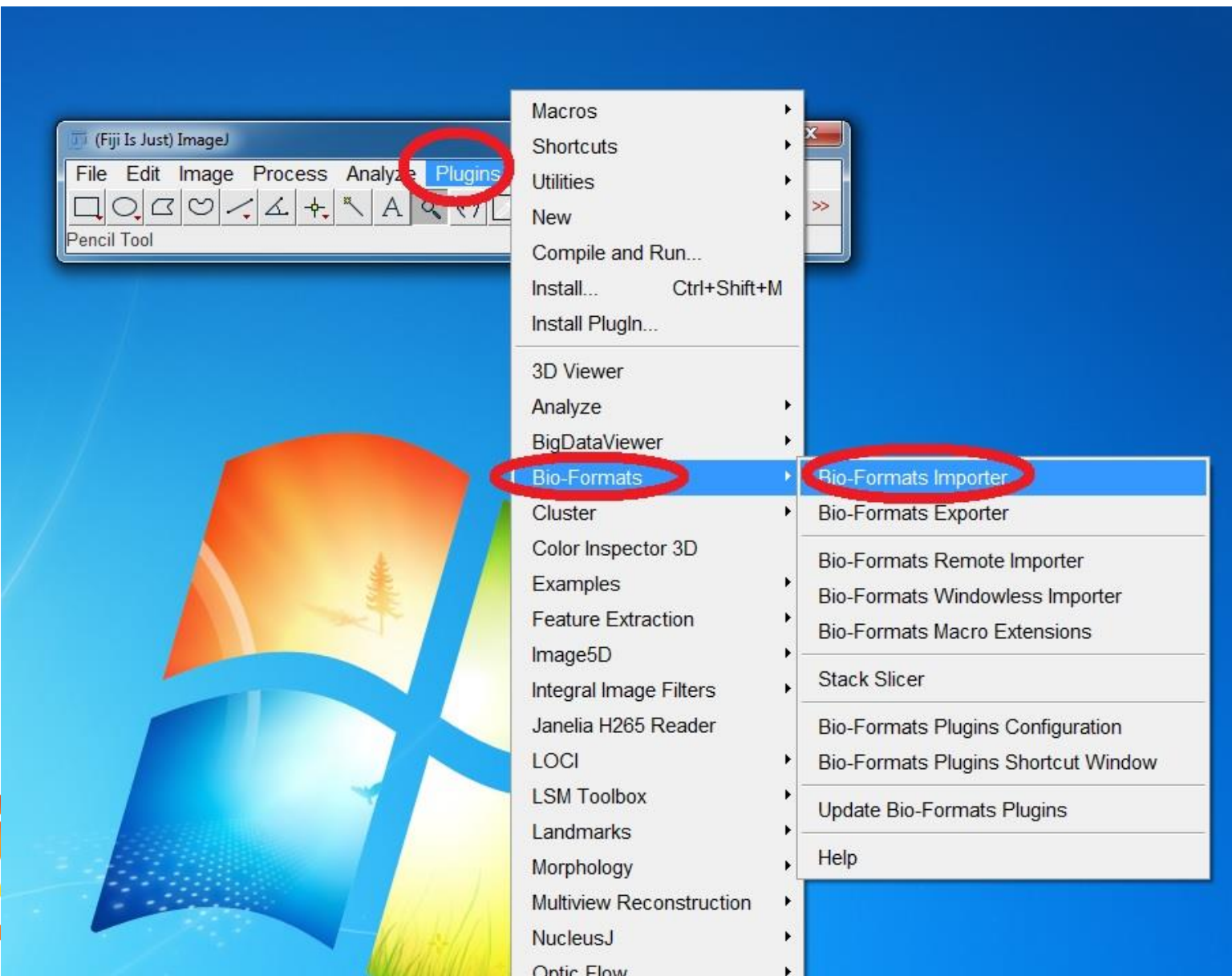


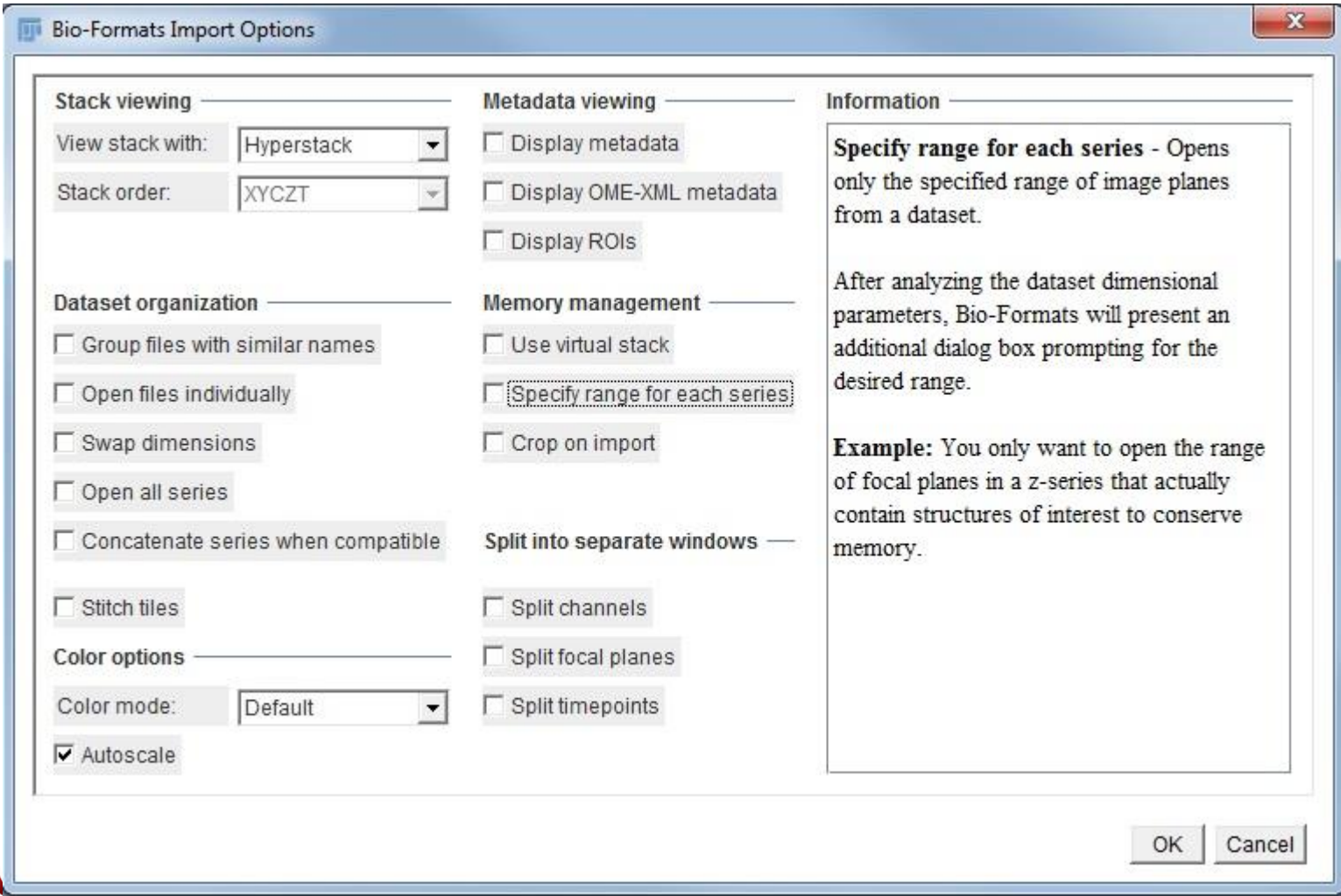
How to save your vsi images directly to tiff but still keep res above 300dpi in Fiji ImageJ?

- **Important: your original image must be greater than 600 dpi (usually this is not a problem using VS 120. Original resolution is generally way better than 600 dpi even using 10X lens)**
- **Advantages of this method:**
 - a. **You only need Fiji Image and can do vsi images directly**
 - b. **Much faster than conversion**
 - c. **Final resolution is greater than 300dpi and therefore good enough for publishing**
- **Disadvantages of this method:**
 - a. **Only works with the whole vsi image (unable to keep zoomed in vsi image)**
 - b. **A little bit slower than the method using “copy display image” although much faster than conversion**

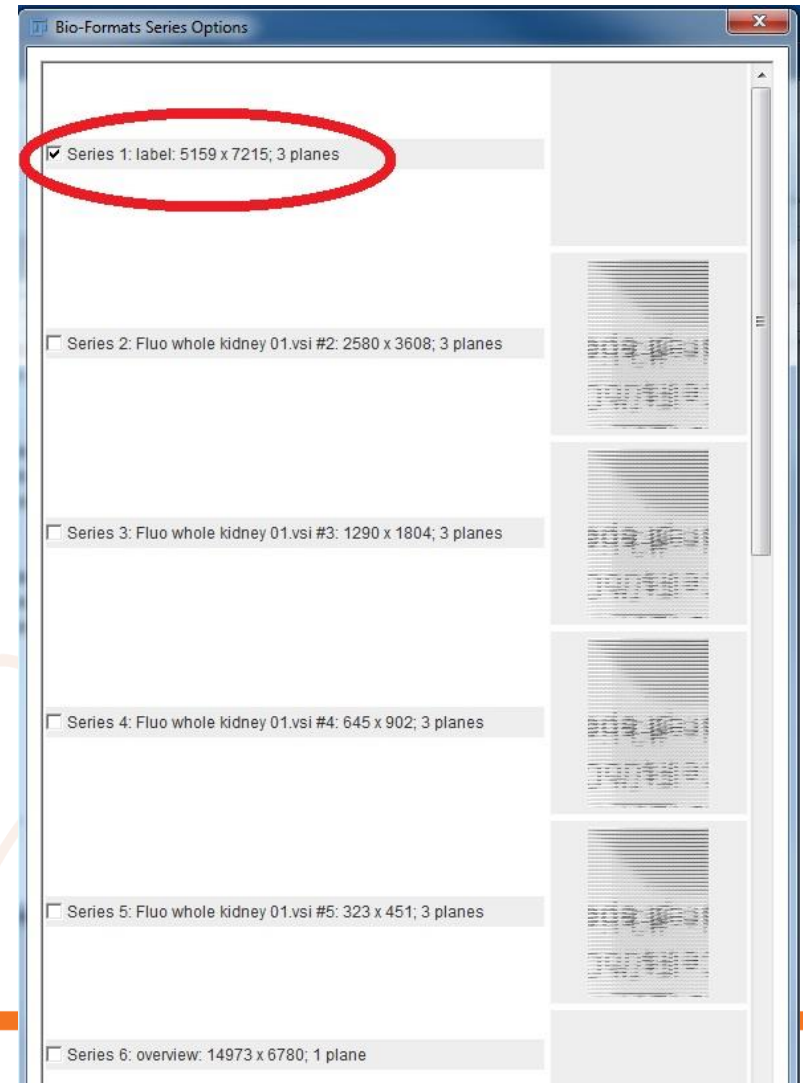
- Open your image



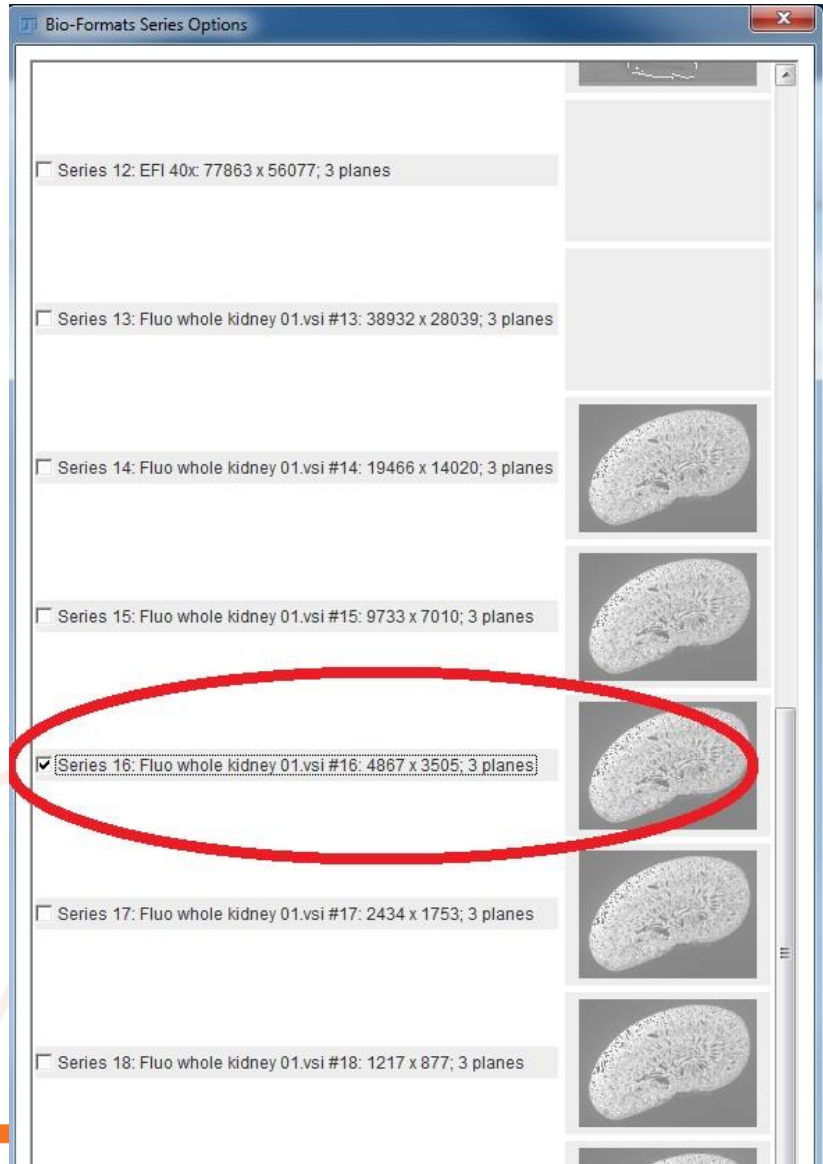
- Now you have a window like this popping up



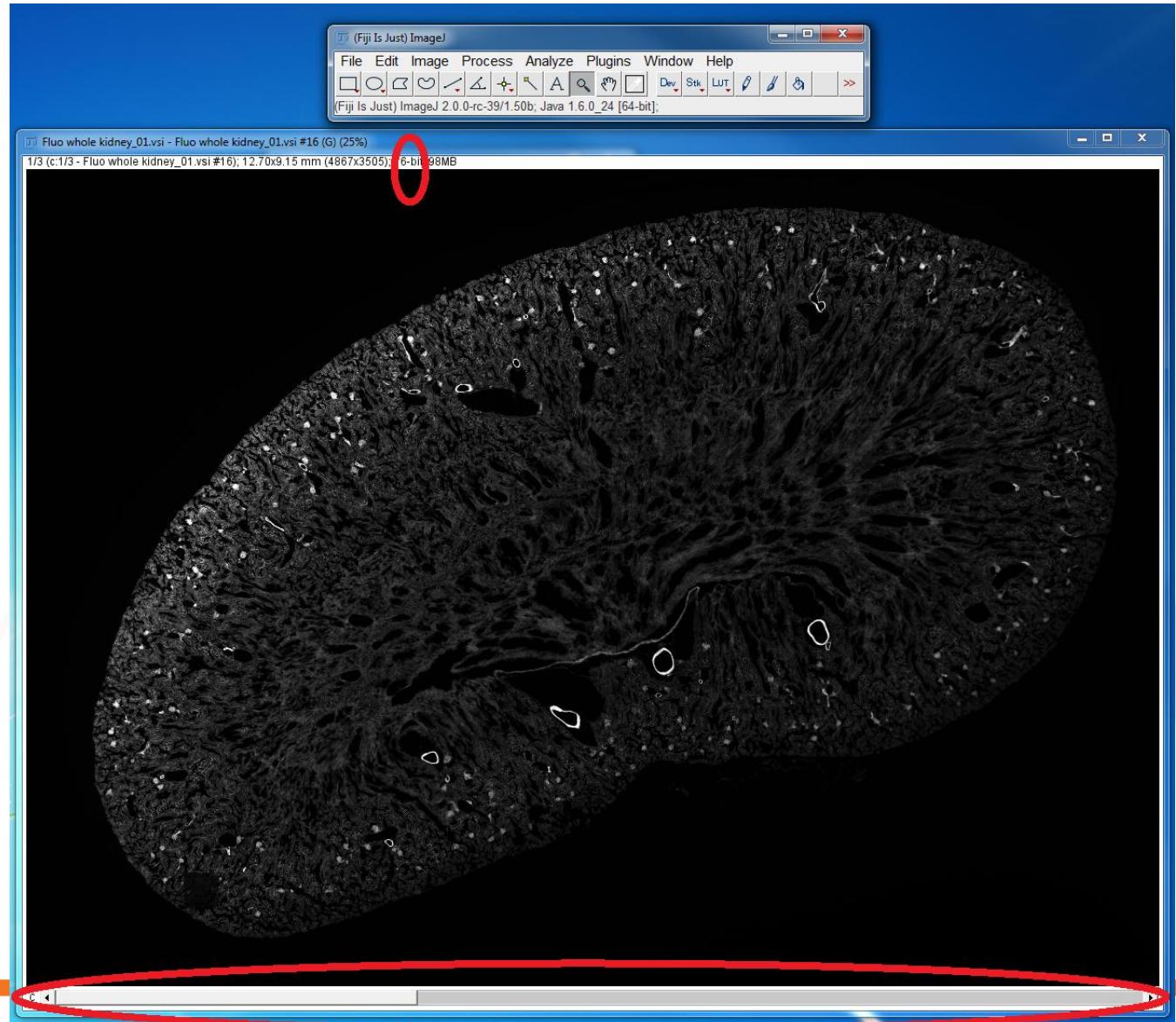
- Your image will break into a list of layers at different levels of resolution.
- Unselect Label series if you don't want to keep it. Its okay to keep your label (just leave the tick on)



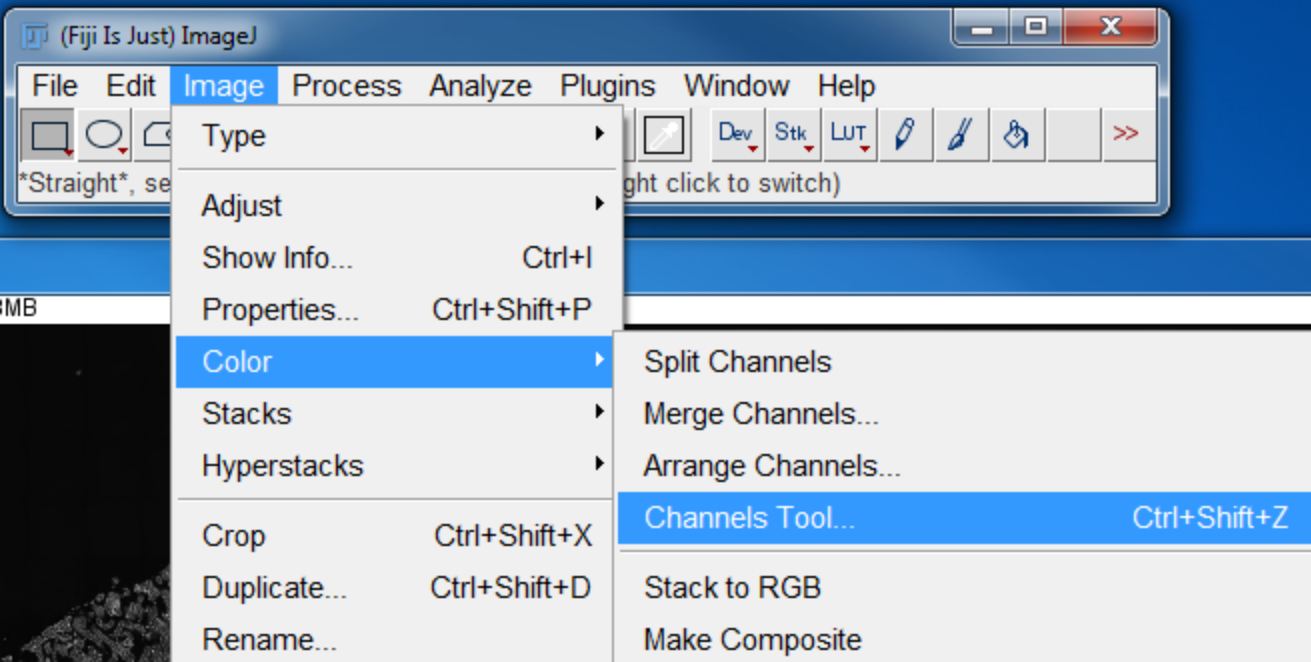
- 4. Scroll down the list and select the image at a reasonable image resolution. Then press “ok”



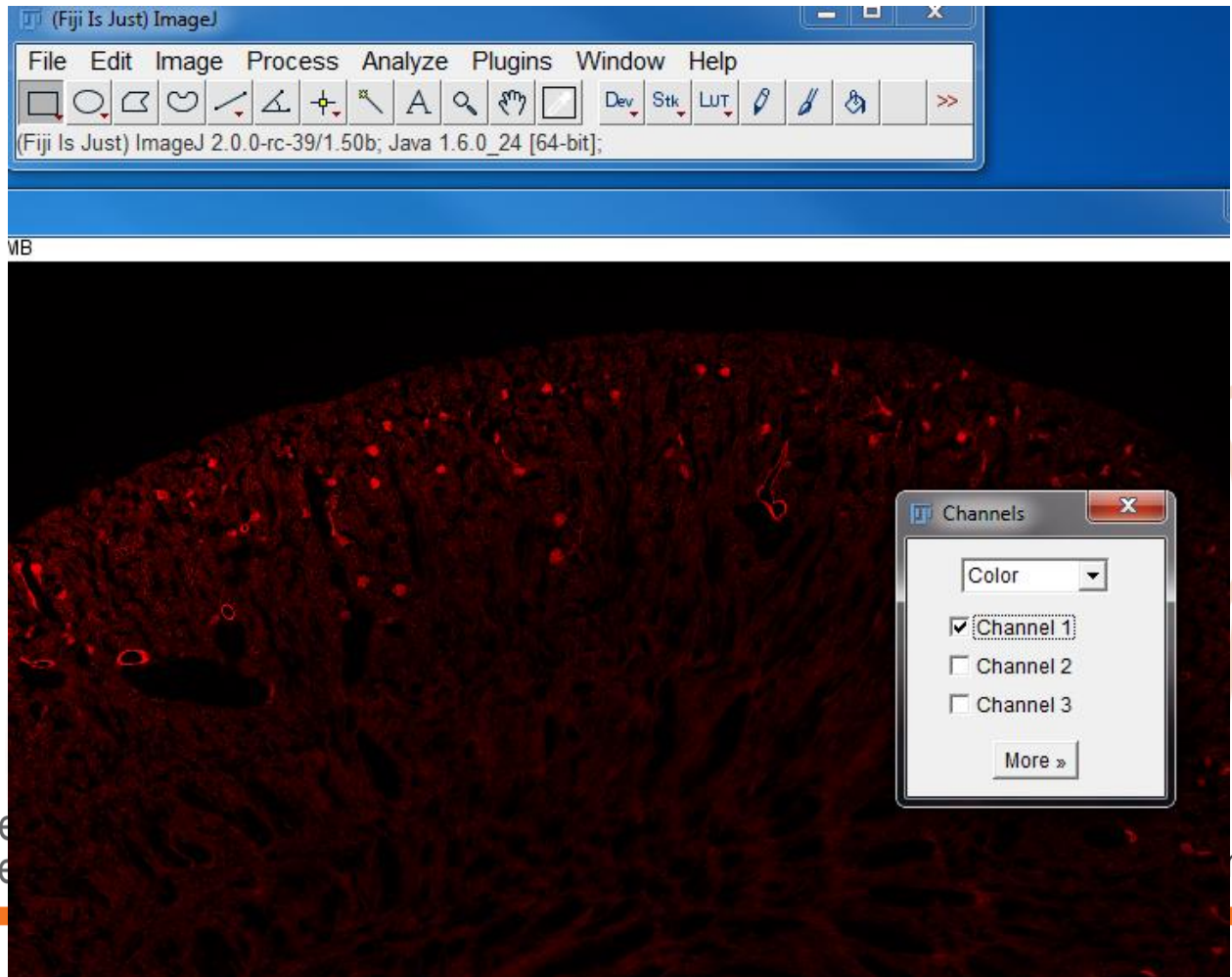
- In ImageJ, your image look slike this: 16-bit, multiple channels



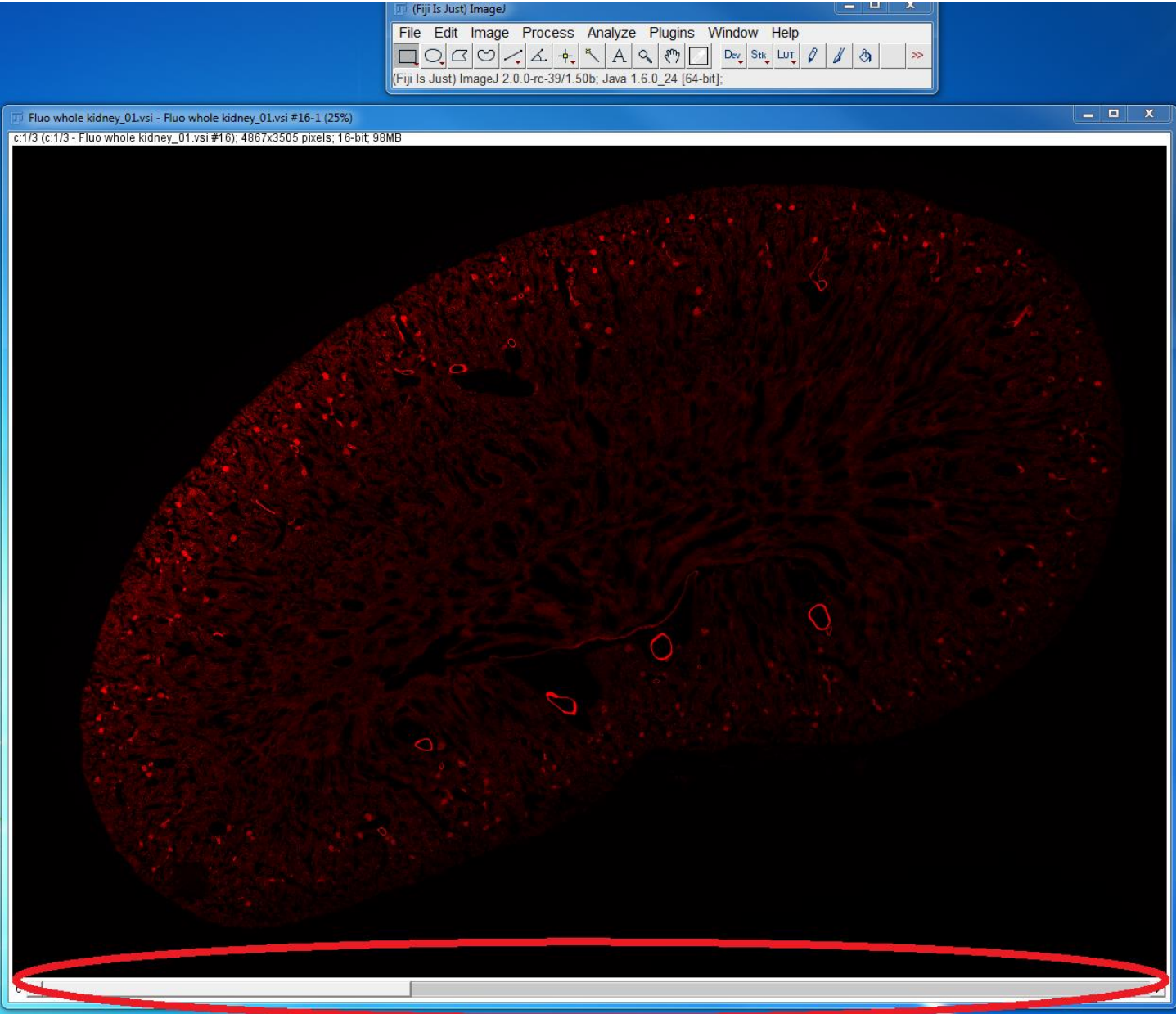
- Now you need to load colors to different channels: Image-Color_Channel tools



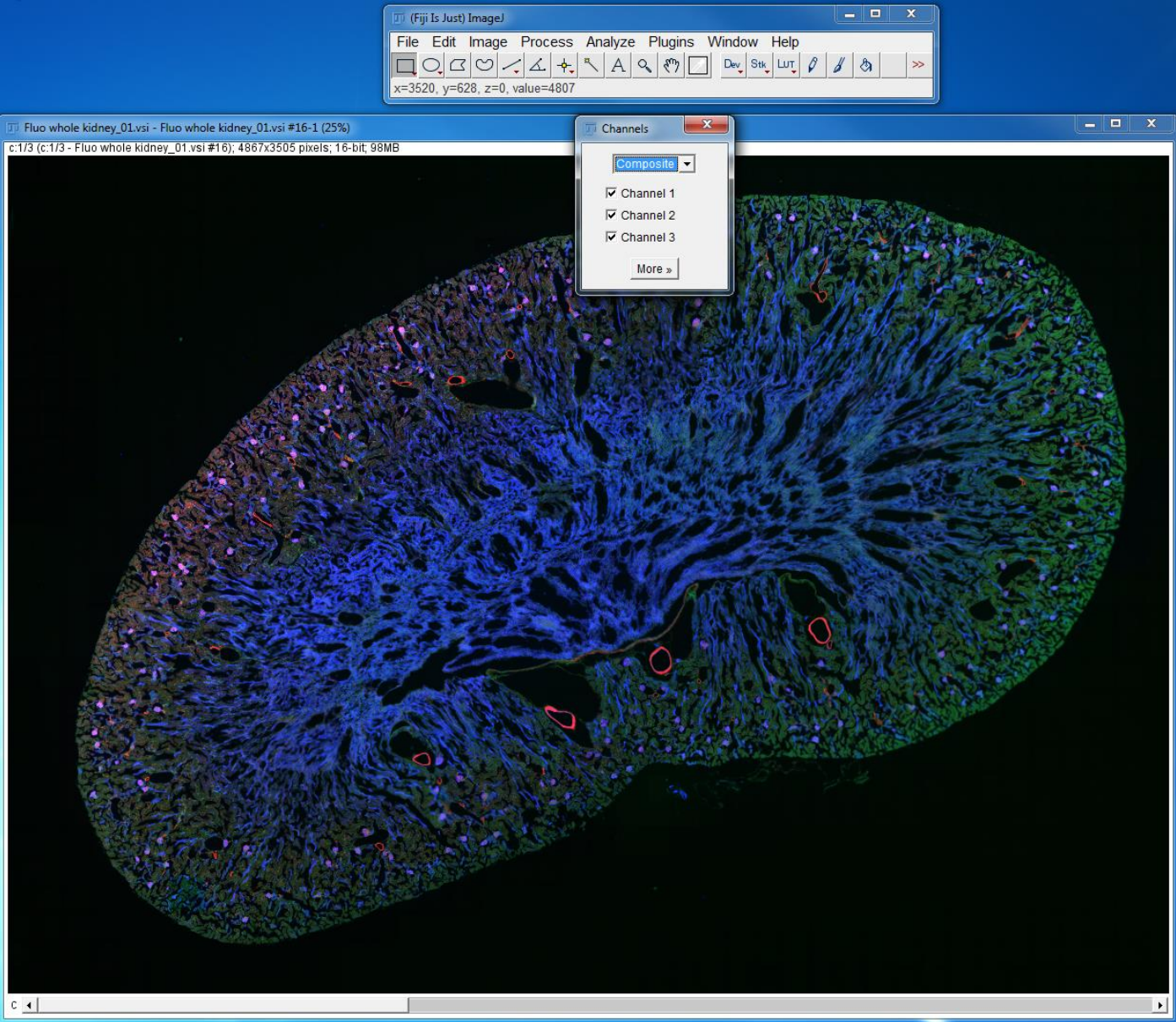
- Now, select “color” from the drop down list. Usually, your original color assignment will be applied. You can also choose to change to other fake colors of individual channels to your likes: i.e. cha1 to blue, ch2 to green, and ch3 to red...



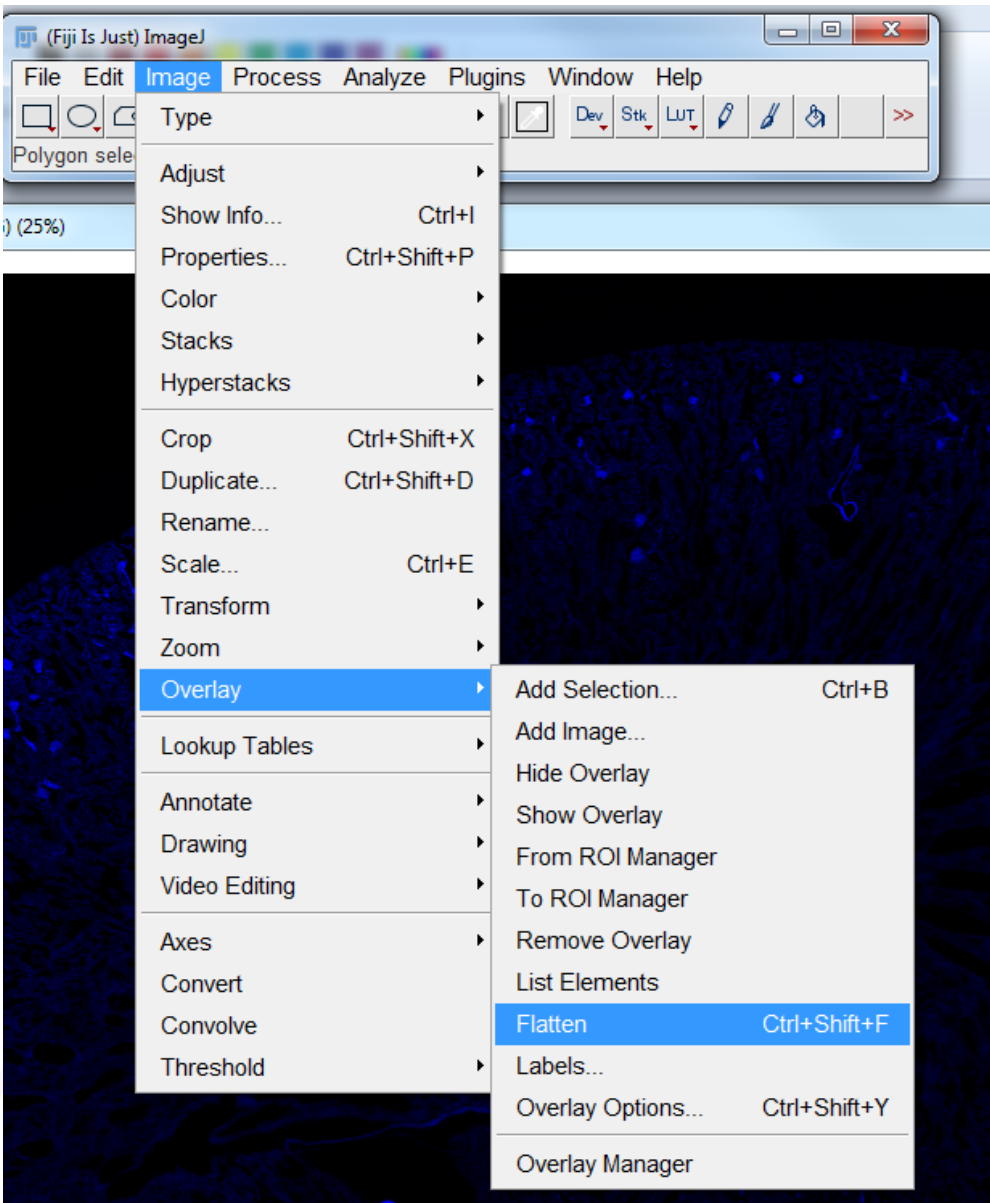
- Now, your image looks like this: still multiple channels but each ch is in color.



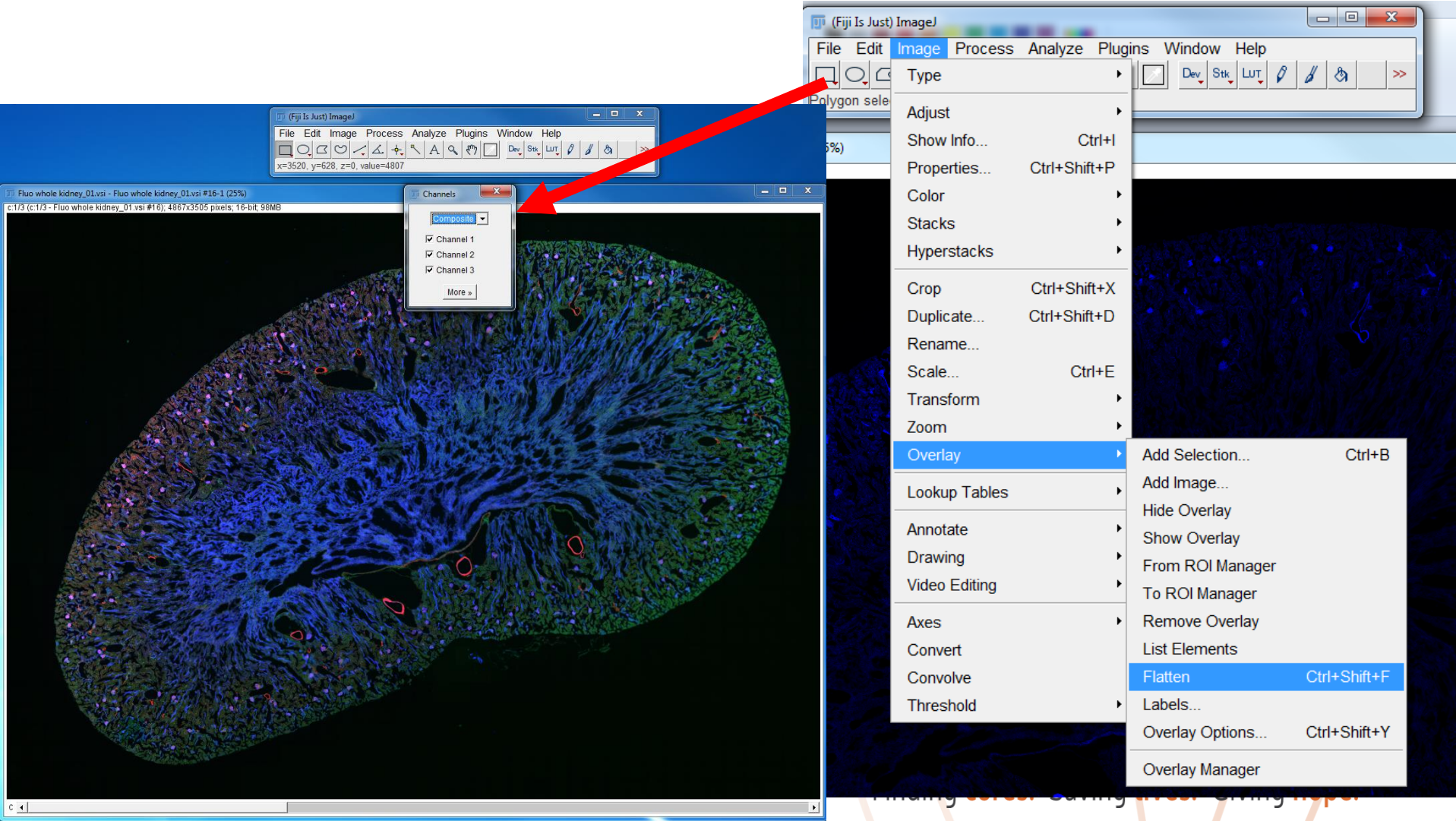
- Still in “Image_color_channel tools”, Choose “composite” (if your image type is 16 bit. Ignore this step if your image is RGB type).



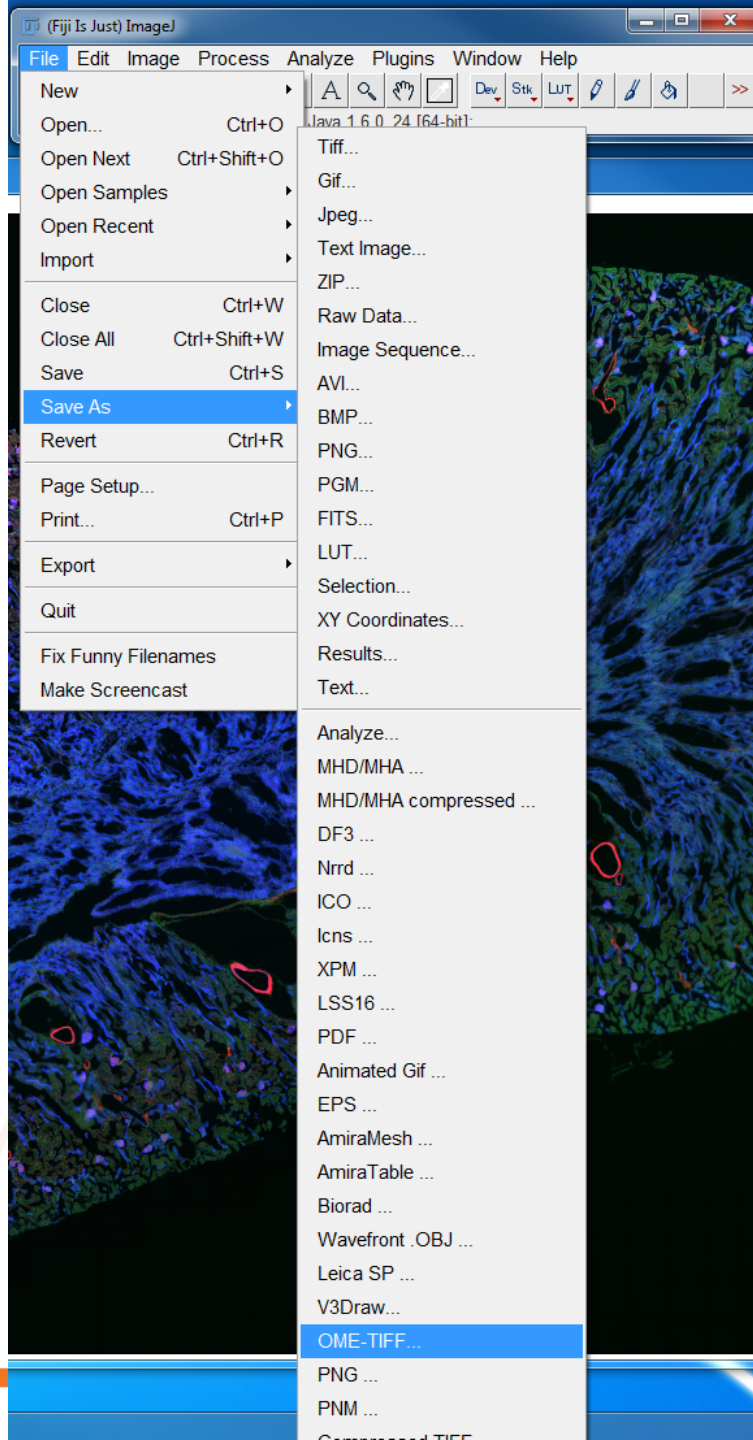
- Flatten your image so your final images wont be multiple channels any longer.



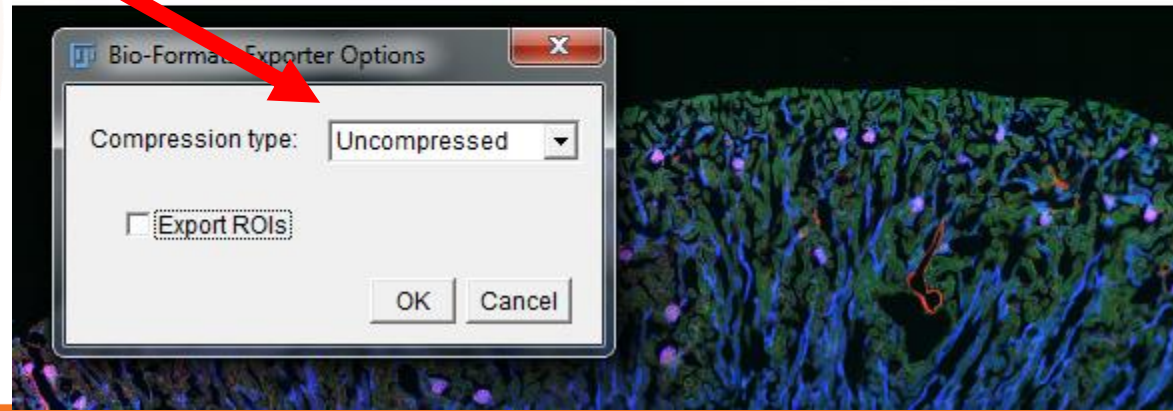
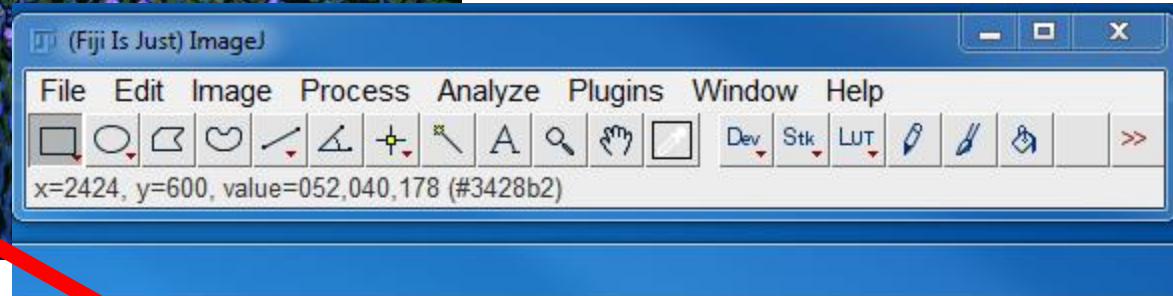
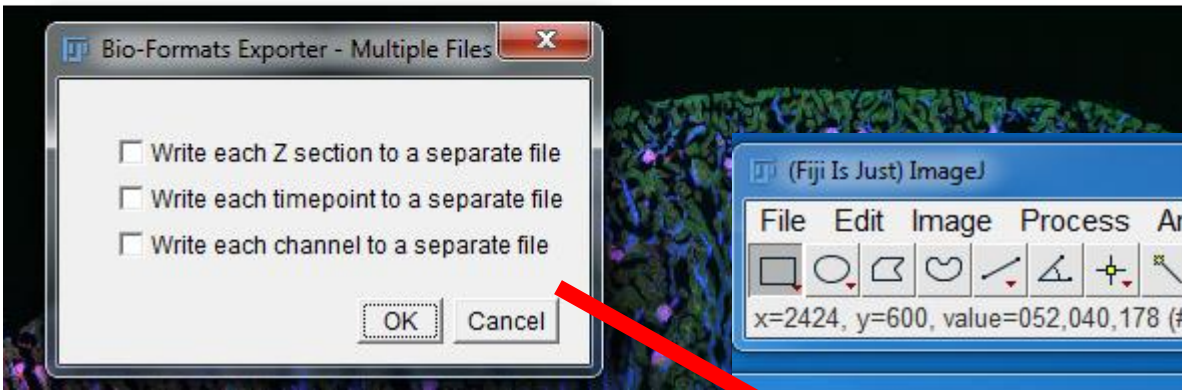
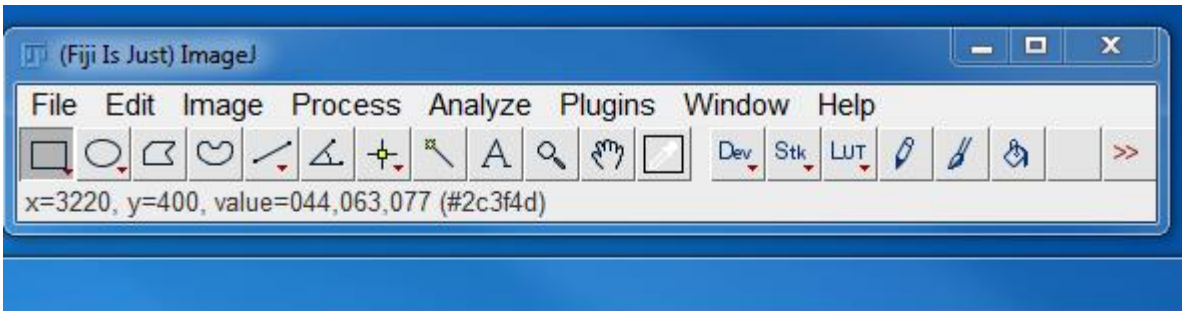
- Now your final images have changed from multiple channels to RGB.



- Save as “OME-Tiff”



- Unselect these options...



- Test if resolution of the displayed image is above 300dpi: find the image you just saved from ImageJ, right click on it, choose “properties”, you will have a window popping up like this

